

RealVision ProDocTivity

As part of your company's Preventive Maintenance program, you may want to review your integration strategy. Your Preventive Maintenance system can tie in with other powerful RealVision productivity enhancing applications.

Integrator™ - Complete paperless Manufacturing System.

DocManager™ - PDM, product documentation management, system.

ToolManager™ - Comprehensive tool crib management system.

DNCPro 2000™ - Powerful state of the art DNC communication, scheduling and data collection system.

Plan Builder™ - Rapid process planning and creation tool.

Contact us to find out more about RPM and these other fine products. Schedule an in house remote product demonstration. See how RealVision can support your company through the latest technology.

Call today to find out when and where the next Seminar is :

Managing Your Maintenance Work Load

Creating A Paper"less" Environment

Tool Crib of the 21st Century

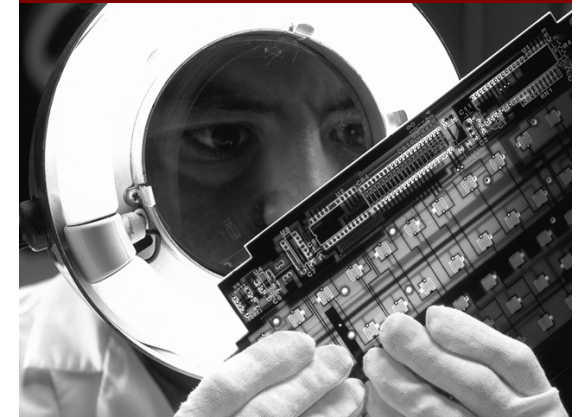
Managing Documentation in a Dynamic World

Also ask about our Demo CD or one of our White Papers on the specific product.

RealVision Inc.
1092 Parkinson Rd.
P.O. Box 187
Eagle, ID 83616

Manage Your
Maintenance
Workload With

RPM™



RPM Preventive Maintenance System

Managing In Today's World

In today's world of sophisticated equipment, it is critical to ensure the life of your investment through appropriate maintenance. As the equipment becomes more and more complex, so do the procedures to maintain it. How do you manage the procedures, manuals, schematics, spare parts, specialized tools, labor time



and costs? How do you pinpoint problem areas with the equipment? How do you decide when it is better to buy a new piece of equipment or just repair the old one? How can you manage all this without ripping your hair out? With the least amount of frustration.

RealVision Inc., a company that has been a leader in industrial application software for over 13 years, has your solution. **RPM!** The **RealVision Preventive Maintenance** system is the latest addition to the ProDocTivity suite of productivity enhancing software solutions.

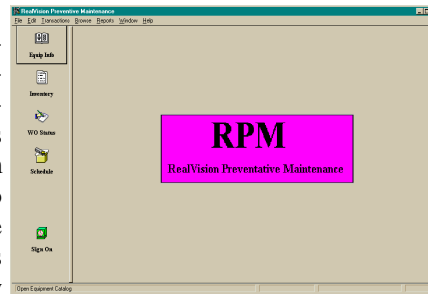
Powerful and Easy To Use



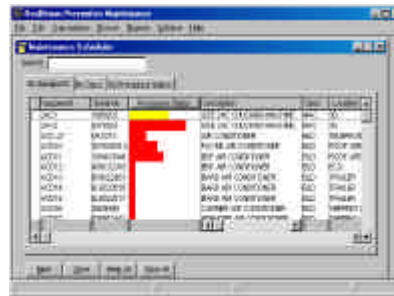
RPM's graphical user interface makes learning how to manage your facility's equipment incredibly easy. RealVision will support you every step of the way with multimedia manuals, On-Line training and tech support. RPM is a professional level product that is easier to use than any of the other simple PM systems available.

Feature Rich

RPM can manage the maintenance requirements of today's companies, from pizza ovens to truck fleets. The RPM system is completely adaptable to your needs. It gives you the ability to selectively use the specific requirements you need for your equipment maintenance management.



Some of the Many RPM Features include:



Inventory Control

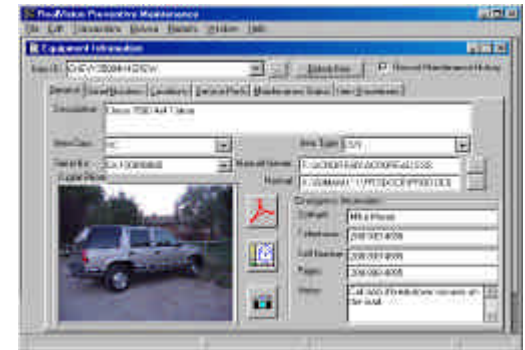
Warranty Management

Tool and Part Kitting Per Procedure

Full Multi Level User Security

Document-Process Management (tie key documents with the maintenance procedure)

Labor Scheduling by Department or Individual



Equipment History Tracking

Serial No. Tracking

Extensive Reporting Capabilities

Graphical Display of Information

RPM Fits Any Size Company

Whether you are a one person company or have 25,000 employees, RPM can accommodate your needs. RPM can run as a stand-alone system, a LAN based network application, an Oracle™ based or SQL Server based client/server system. RPM gives you the ability to grow. Start with a single stand-alone system then move to a Client server system as your company grows without losing any data.

RealVision Inc.

1092 Parkinson Rd.
P.O. Box 187
Eagle, ID 83616

Phone: 800-487-1031
Tech Support: 208-939-2428
Email: sales@realvision-inc.com

Web: www.realvision-inc.com